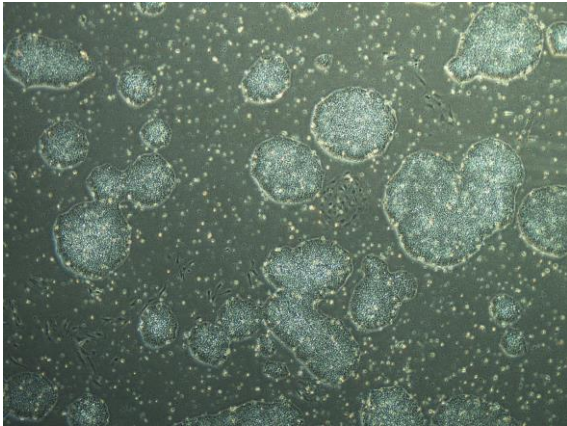
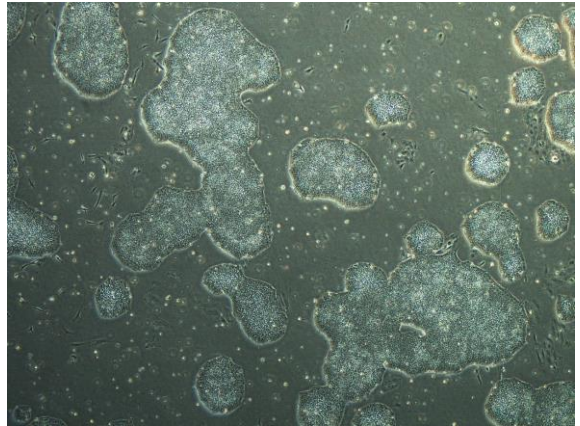


【 CiRA-j-1006 】 Morphology of iPSC colonies

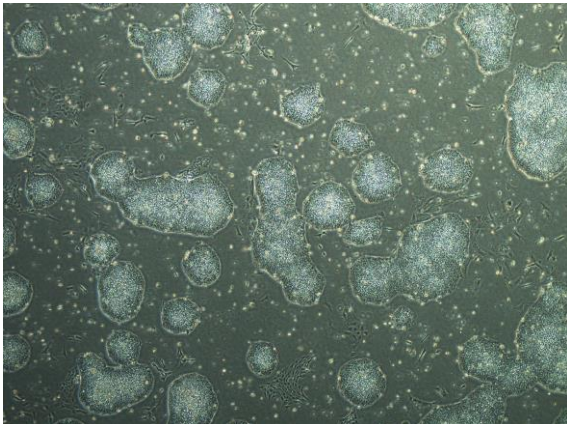
CiRA-j-1006-A: passage-2



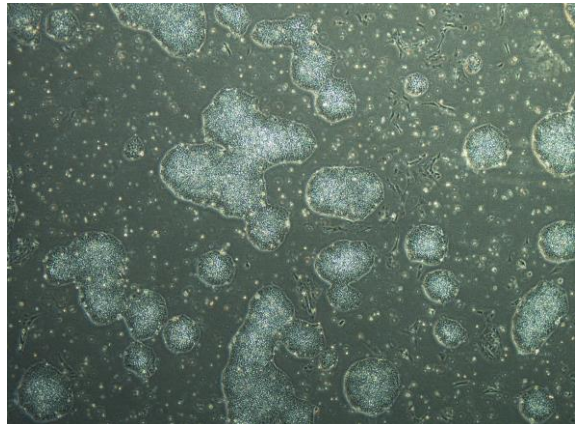
CiRA-j-1006-B: passage-2



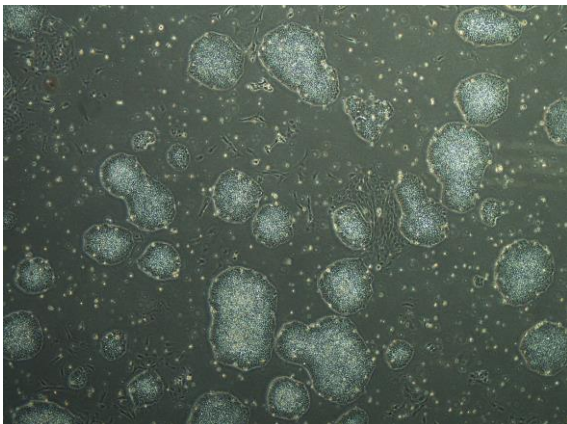
CiRA-j-1006-C: passage-2



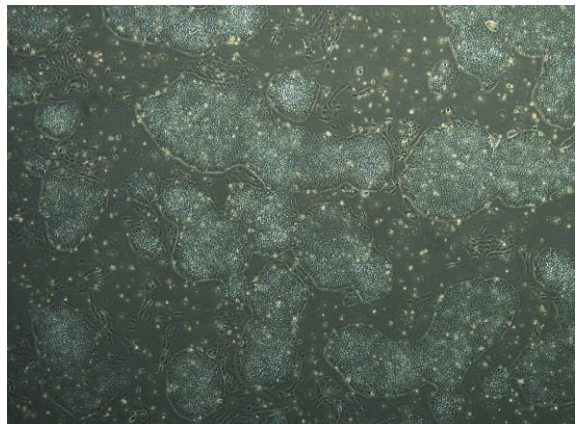
CiRA-j-1006-D: passage-2



CiRA-j-1006-E: passage-2



CiRA-j-1006-F: passage-2



(All images were captured at 4x magnification)